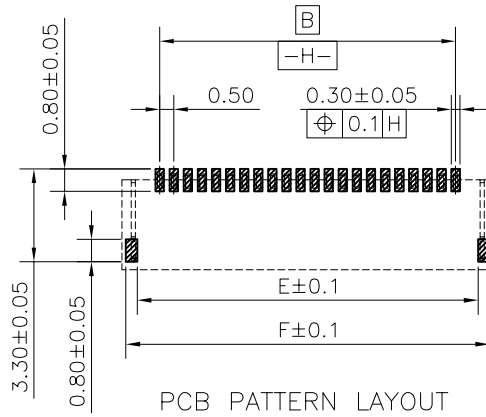
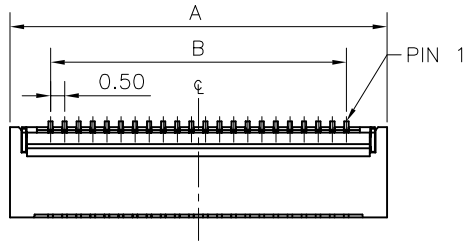


ROHS COMPLIANT



NOTES:

1. MATERIAL:

- 1.1 HOUSING: THERMOPLASTIC, HIGH TEMP.UL94V-0; COLOR:WHITE.
- 1.2 ACTUATOR: THERMOPLASTIC, HIGH TEMP.UL94V-0; COLOR:BLACK.
- 1.3 CONTACT: COPPER ALLOY
- 1.4 FITTING NAIL: COPPER ALLOY

2. FINISH:

- 2.1 CONTACT: 50u" MIN. NICKEL UNDERPLATING OVERALL GOLD FLASH PLATING .

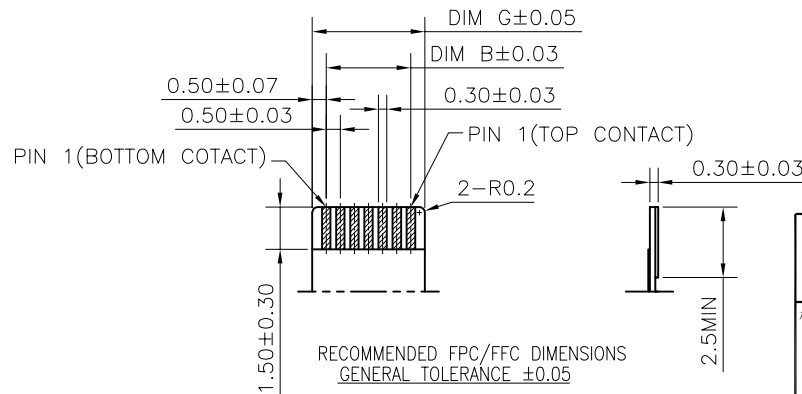
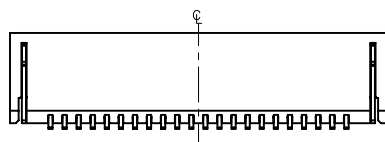
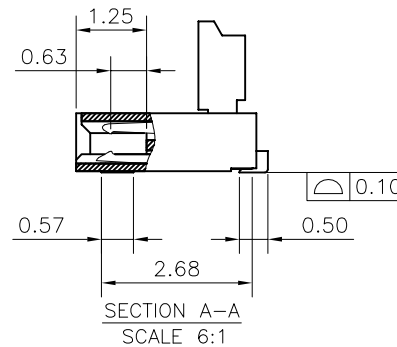
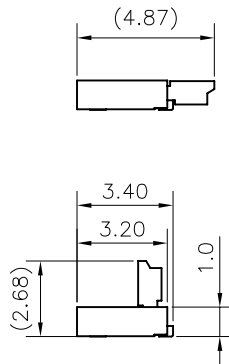
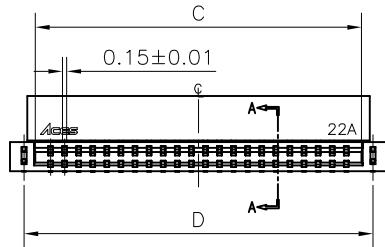
2.2 FITTING NAIL:

- 100~200u" TIN PLATING ON SOLDER TAILS(LEAD FREE).
- 50~100u" NICKEL UNDERPLATING OVERALL.

ORDER CODE:

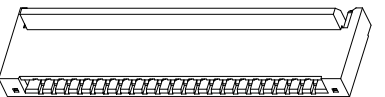
ZIF2D xx -0.5DF-R

No of contacts: 31-40
(see table below)



CKT	DIM A	DIM B	DIM C	DIM D	DIM E	DIM F	DIM G
31	17.88	15.00	16.07	16.88	16.60	17.40	16.00
32	18.38	15.50	16.57	17.38	17.10	17.90	16.50
33	18.88	16.00	17.07	17.88	17.60	18.40	17.00
34	19.38	16.50	17.57	18.38	18.10	18.90	17.50
40	22.38	19.50	20.57	21.38	21.10	21.90	20.50

一般公差 TOLERANCES X +0.5 .XX ±0.15 X +0.25 .XXX ±0.1 ANGLES ±2°		GTK UK LTD.	
檢驗尺寸標示 SYMBOLS ϕ \ominus INDICATE CLASSIFICATION DIMENSION \ominus MARK IS CRITICAL DIM. \oplus MARK IS MAJOR DIM.	品名 (TITLE) 0.5mm Pitch Easy On FFC/FPC Conn.	製圖 (DR) 17/06/28 LLJ 審核 (CHKD) Andrew	圖號 (DWG NO.) ZIF2Dxx-0.5DF-R 核准 (APPD) Charleslee
表面處理 (FINISH)	比例 (SCALE) 3:1	單位 (UNITS) mm	張數 (SHEET) 1 OF 1 SIZE A4 REV D



A | B | C | D | E | F