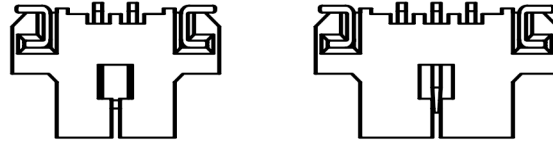
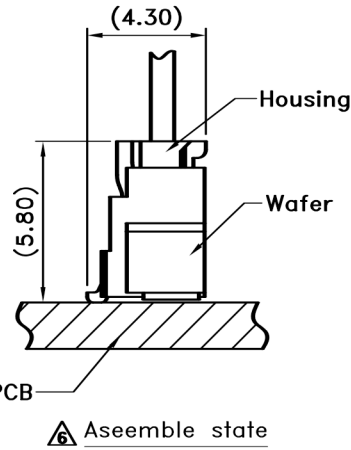
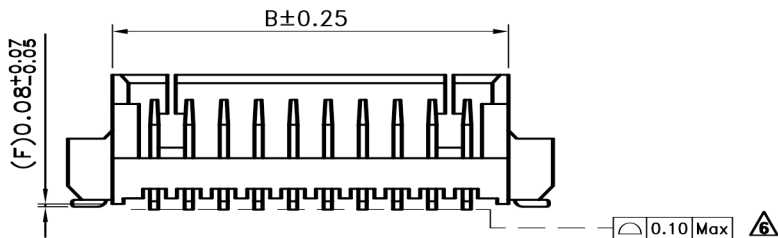
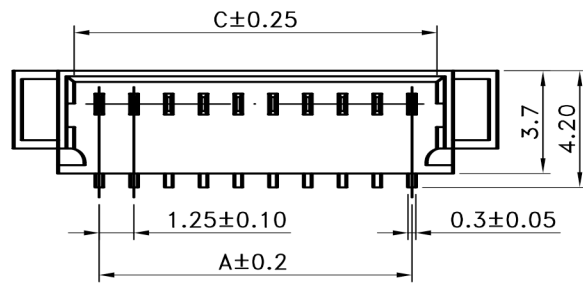
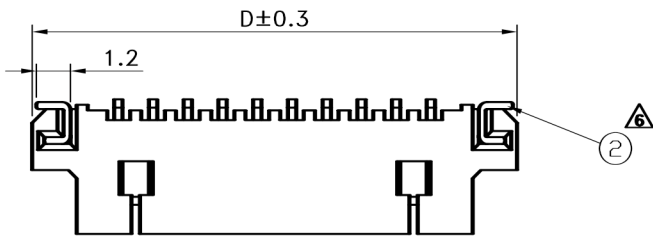


Recommended PCB Layout

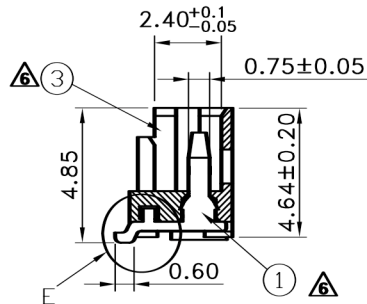


2 Circuit

3 Circuit



Asemble state



Detail E

SCALE 2:1

SPECIFICATIONS

- Current Rating : 1A AC/DC
- Withstanding Voltage : 250V AC /minute
- Insulation Resistance : 100MΩ min
- Temperature Range : - 40°C to + 85°C
- Contact Resistance : 20mΩ max

ORDER CODE

WTBB-XXS-SMH2T-R

No positions 02-15

MATERIAL

- 1.Contact:Brass,Tin plated
- 2.Housing:Nylon 46 UL94V-0
Colour:Natural
- 3.Solder nail:Brass

Quantity per reel:1000pcs

Poles	Dimensions (mm)			
	A	B	C	D
2	1.25	4.25	3.05	7.65
3	2.50	5.50	4.30	8.90
4	3.75	6.75	5.55	10.15
5	5.00	8.00	6.80	11.40
6	6.25	9.25	8.05	12.65
7	7.50	10.50	9.30	13.90
8	8.75	11.75	10.55	15.15
9	10.00	13.00	11.80	16.40
10	11.25	14.25	13.05	17.65
11	12.50	15.50	14.30	18.90
12	13.75	16.75	15.55	20.15
13	15.00	18.00	16.80	21.40
14	16.25	19.25	18.05	22.65
15	17.50	20.50	19.30	23.90



APPROVED BY	SCALE	UNIT	TOLERANCE	LTR	REVISION RECORD	NAME	DATE	LTR	REVISION RECORD	NAME	DATE
張育瑞		mm	.0 ±0.30	▲				▲			
CHECKED BY	PROJ	VER NO.	.00 ±0.20	▲				▲			
黃科源		a6	.000 ±0.10	▲				▲			
DRAWN BY	DATE	SIZE	ANGLE	▲				▲			
林豐盛	2011/03/18	A4	0° ±1°	▲				▲			
		SHEET	0° ±	▲				▲			
			1/1	▲		圖面合併&移除額定電壓	林豐盛	11/03/18			

PART NO WTBB-xxS-SMH2T-R

1.25mm WIRE-TO-BOARD HEADER,SMT,VERTICAL

CUSTOMER

Conforms to The RoHS Instruction