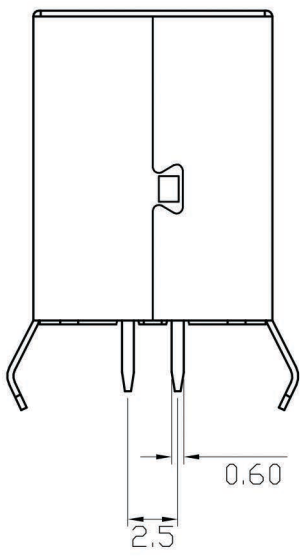
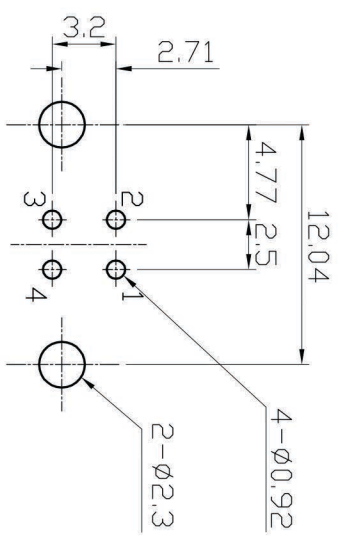
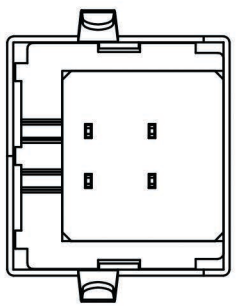
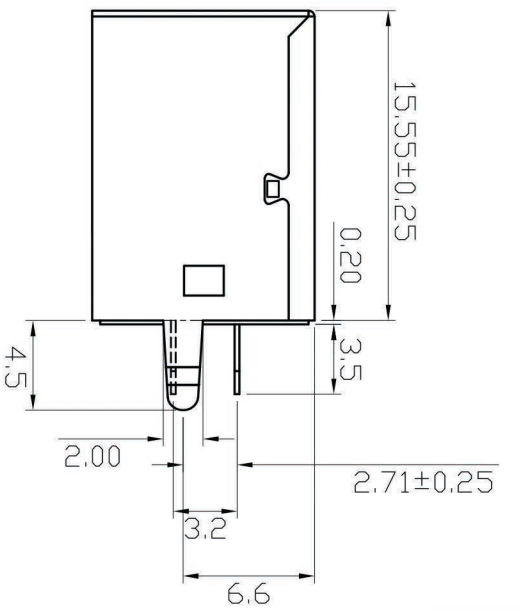
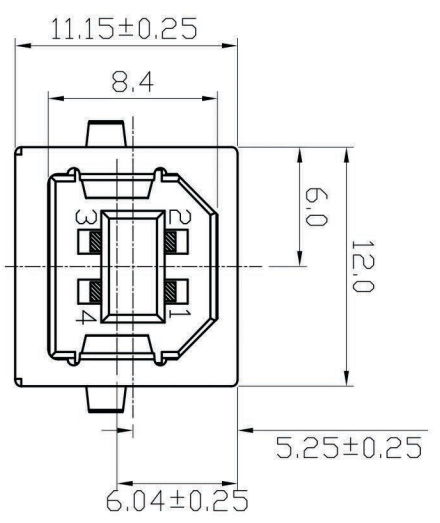


REV. ZONE	REVISION	DATE



(COMPONENT SIDE)  
PCB LAYOUT

NO.	NAME	MATERIAL	FINISH	REMARK	Q'TY
1	HOUSING	PBT G.F.	BLACK		1
2	PIN TERM.	PHOS. BRONZE T:0.25	GOLD/TIN PLATED	Gold:~3u', Ni:40~60u', TIN:20u' (100% pure tin of lead free plating)	4
3	SHELL	BRASS T:0.3	NICKEL PLATED	Ni:80~120u'	1
4	BOTTOM COVER	PBT G.F.	BLACK		1

**Specification:**  
**Contact Resistance:** 30m Ohm Max.  
**Insulation Resistance:** 1000M Ohm Min. At 500VDC.  
**Rated Voltage And Current:** 1.5A At 250VAC Minimum.  
**Dielectric Withstanding Voltage:**  
 750V AC (rms) for 1 Minute(Rev. 1.1)  
**Durability (Life Test):** 1500 Cycles  
**Insertion Force:** 35 Newton Maximum.  
**Extraction Force:** 10 Newton Minimum.

ROHS COMPLIANT



GTK UK Ltd

COMPUTER NO.

UNIT

SCALE

PART NAME

USB B TYPE FLAT 4 PIN DIP

APPD.

CKD.

DWG.

DATE

TOLERANCE

PART NO.

REV.

MODEL

PAGE 1 OF 1

TINA

21-05-10

X: ±0.38  
 XX: ±0.25  
 XXX: ±0.13  
 XXXX: ±0.05

USBS - BT2 - B - R

A0