

HSF

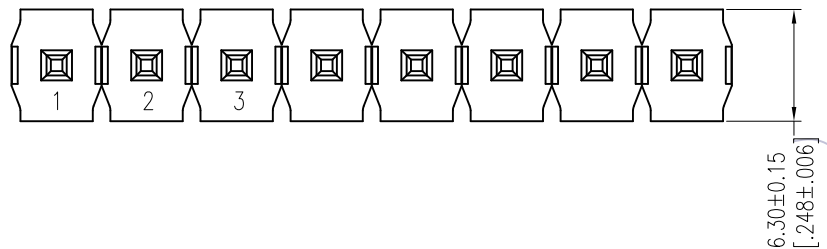
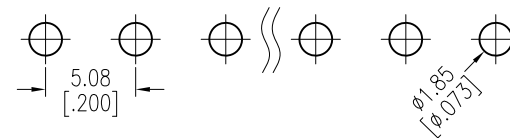
ROHS COMPLIANT

Recommended P.C.B Layout (Top Side)
(PCB BOARD TOLERANCE±0.05)

NOTES:

Rated Current:7.0AMP.
Contact Resistance:20mΩ Max.
Withstand Voltage:1000V AC/DC
Insulation Resistance:1000MΩ Min.
Operation Temperature:-40°C to +105°C

Contact Material:Brass
Contact Plating: Sn Over Ni
Insulator Material:LCP+30%G.F UL94V-0 BK

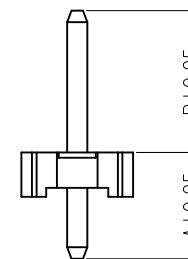
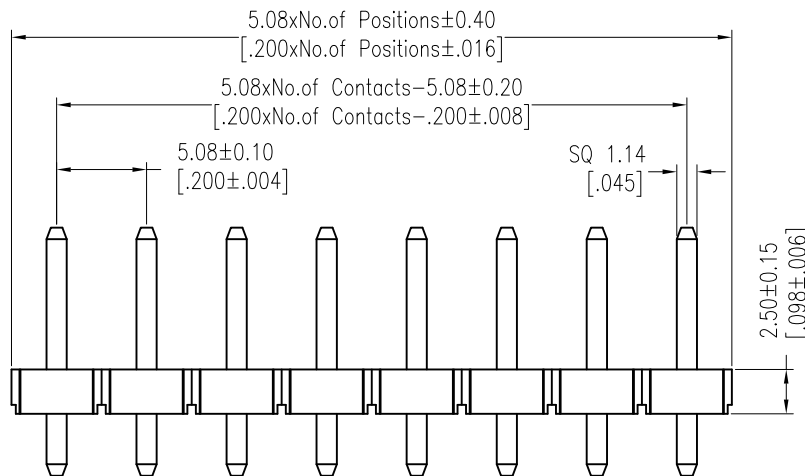


ORDER CODE:

PHSS xx T6 -8.0 - R

No of contacts:
02-20

Mating pin length:
(see table)



Dimensions	
A	3.5mm
B	8.0mm

REV	DATE	MODIFICATION DESCRIPTION	CHANGE	OPERATION	DRAW	DATE	SCALE	Fit	PART NO.
A2	2018/01/26	MODIFY PART NO.	-----	X.X ±0.40	William Chen	2018/01/26	UNIT	mm [inch]	PHSSxxT6-8.0-R
A1	2013/01/08	MODIFY	-----	X.XX ±0.25	CHECK	DATE	SIZE	A4	
A0	2012/07/03	NEW	-----	X.XXX ±0.15	APPROVE	DATE	SHEET	1/1	5.08 Pin Header, SINGLE ROW, S/T, H=2.5
				Angle ± 3'			PROJ.	☉	
				DIM TOL					



GTK UK Ltd