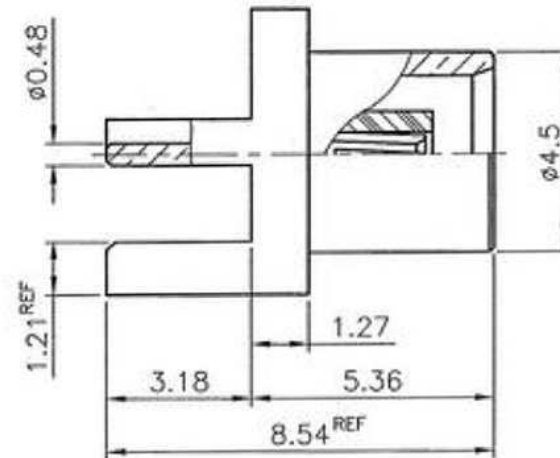
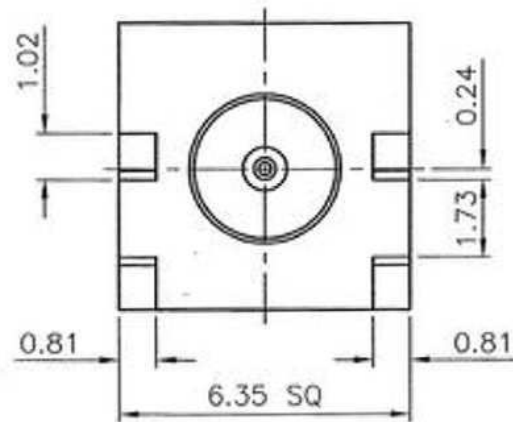



REMARK: RoHS COMPLIANT

FOR CUSTOMER



NOTES: FINISH (PLATING THICKNESS IN MICRO-INCHES)

1. BRASS PER QQ-B-626
2. GOLD PL 3 MIN OVER NICKEL PL 70 MIN THICK OVER COPPER STRIKE
3. GOLD PL 30 MIN OVER NICKEL PL 70 MIN THICK OVER COPPER STRIKE
4. TEFLON MIL-P-19468
5. BERYLLIUM COPPER PER QQ-C-530

					DIMENSIONS ARE IN MILLIMETERS				PART NO.		 GTK UK LTD. TITLE MCX END LAUNCH JACK (FOR 1.57 BOARD THICKNESS) DRAWING NO. MCX-JE1-GG25-R
					UNLESS OTHERWISE SPECIFIED TOLERANCES (一般公差)				APPROVED	DATE	
CONTACT PIN	NOTE 5	NOTE 3			0.5~6 = ±0.2				<i>[Signature]</i>	02/15/08'	
INSULATOR	NOTE 4	WHITE			>6~30 = ±0.4				<i>[Signature]</i>	02/15/08'	
BODY	NOTE 1	NOTE 2			>30~120 = ±0.6						
					>120~315 = ±1						
					>315~1000 = ±1.6						
					ANGLES(角度) = ±5'						
NO.	DESCRIPTION	MATERIAL	FINISH	Q'TY	DRAWING NO.	SCALE	6/1	ISSUE	A1	<i>[Signature]</i>	02/15/08'