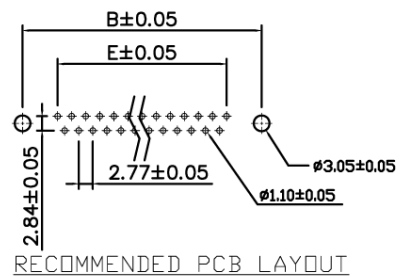
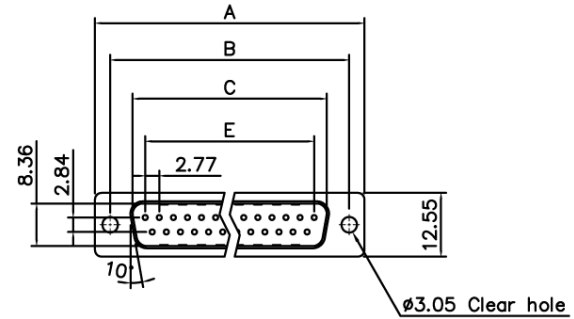
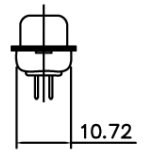
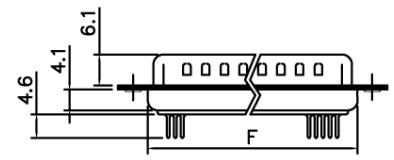


RoHS COMPLIANT

| REVISIONS | | | | |
|-----------|---------|-------------|-------------|------------|
| REV | ECN NO. | DESCRIPTION | APPROVED BY | DATE |
| A | | △ | KING CHIU | 2006-09-20 |



Product Specification
 Material
 Insulator : Glass-Filled Thermoplastic PBT,UL94V-0
 Contact : Copper alloy
 Shell : Steel, 100u" Tin Over 50u" min Copper



Electrical
 Contact Resistance : 20 milliohms
 Max at 1 AMP DC.
 Insulation Resistance : 1000
 megohms at 500 VDC
 Dielectric Withstanding Voltage :
 1000 VAC/rms 60Hz for 1 minute
 Current Rating : 3 AMP
 Volatge Rating : 250 VAC/rms 60Hz

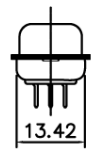
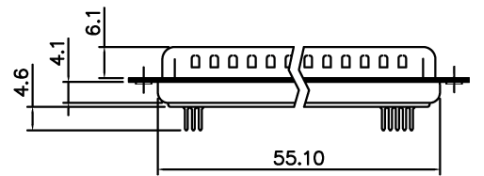
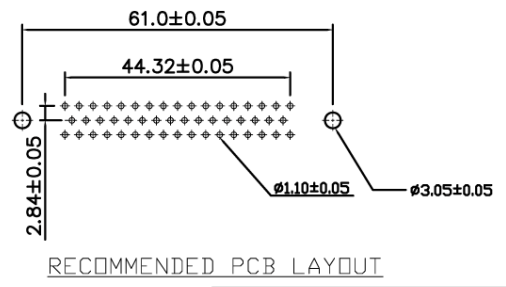
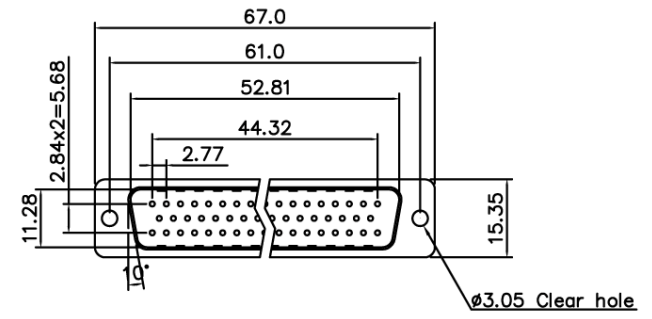
Dimensions

| Positions | A | B | C | E | F |
|-----------|-------|-------|-------|-------|-------|
| 9 | 30.81 | 24.99 | 16.92 | 11.08 | 19.20 |
| 15 | 39.20 | 33.30 | 25.25 | 19.39 | 27.70 |
| 25 | 53.04 | 47.04 | 38.96 | 33.24 | 41.10 |
| 37 | 69.40 | 63.50 | 55.42 | 49.86 | 57.30 |

ORDER CODE;

DxSxxPTWINS-R

Shell size & No positions;
 DEL09 - 9 pos
 DAL15 - 15 pos
 DBL25 - 15 pos
 DCL37 - 37 pos



50 POSITIONS

DO NOT SCALE DRAWING

| | | |
|---|--|--|
| DIMENSIONS: <input type="checkbox"/> mm [INCH] <input type="checkbox"/> INCH [mm] <input checked="" type="checkbox"/> mm ONLY | | CAD GENERATED DRAWING, DO NOT MANUALLY UPDATE |
| UNLESS OTHERWISE SPECIFIED, GENERAL TOLERANCE: DECIMALS ANGLES X: ±0.38 [0.015] X*: ±3° .X ±0.25 [0.010] .X*: ±1.0° .XX ±0.13 [0.005] | | CHECKED BY AND DATE JUSTIN XING 04-29-02 |
| MATERIAL | | APPROVED BY AND DATE KING CHIU 04-29-02 |
| FINISH | | THIRD ANGLE PROJECTION |
| SCALE: 1:1 | | SIZE: A3 |

gtk GTK UK LTD.

TITLE VERTICAL D-SUB PLUG; WHITE INSULATOR, Ø3.05MM PLAIN HOLES

| | |
|-------------------------------------|-----------------|
| DRAWING NO. DxSxxPTW1NS-R | REV A |
| FILE NO.: | SHEET 1 OF 1 |