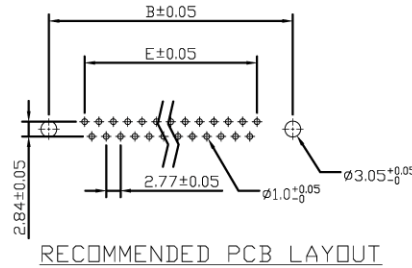
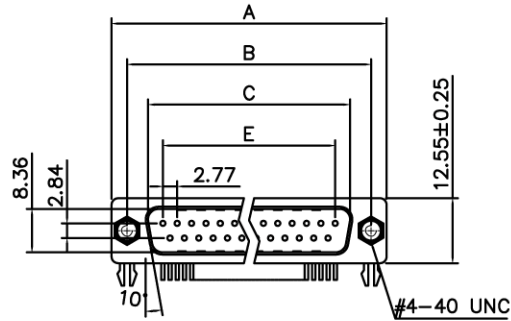


RoHS COMPLIANT

REVISIONS				
REV	ECN NO.	DESCRIPTION	APPROVED BY	DATE
A			KING CHIU	2007-01-06
B			Xie	2014-08-01



Product Specification

Material

Insulator : Glass-Filled Thermoplastic PBT, UL94V-0

Contact : Copper alloy

Shell : Steel, 100u" Tin Over 50u" min Copper

Boardlock : Steel, Tin Plated.

Screwlock : Steel, Nickel Plated.

Electrical

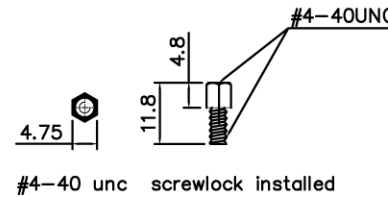
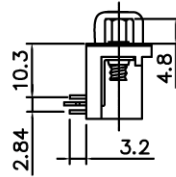
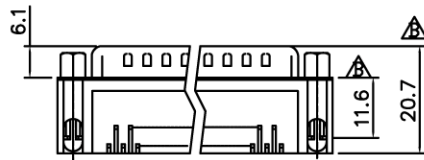
Contact Resistance : 20 milliohms max

Insulation Resistance : 1000
megohms at 500 VDC

Dielectric Withstanding Voltage :
1000 VAC/rms 60Hz for 1 minute

Current Rating : 3 AMP

Volatge Rating : 250 VAC/rms 60Hz



ORDER CODE;

DxLxxPDTK1YS-R

Shell size & No positions;

DEL09 - 9 pos

DAL15 - 15 pos

DBL25 - 15 pos

DCL37 - 37 pos

Dimensions

Positions	A	B	C	E
9	30.81	24.99	16.92	11.08
15	39.20	33.30	25.25	19.39
25	53.05	47.04	38.96	33.24
37	69.40	63.50	55.42	49.86

DIMENSIONS: <input type="checkbox"/> MM [INCH] <input type="checkbox"/> INCH [MM] <input checked="" type="checkbox"/> MM ONLY		CAD GENERATED DRAWING, DO NOT MANUALLY UPDATE DRAWN BY AND DATE JUSTIN XING 05-16-06			
UNLESS OTHERWISE SPECIFIED, GENERAL TOLERANCE: DECIMALS ANGLES .X ±0.38 [0.015] X° ±3° .X ±0.25 [0.010] .X° ±1.0° .XX ±0.13 [0.005]		CHECKED BY AND DATE JUSTIN XING 05-16-06 APPROVED BY AND DATE KING CHIU 05-16-06 THIRD ANGLE PROJECTION		TITLE R/A D-SUB PLUG WITH 10.3MM FOOTPRINT WITH BOARDLOCKS AND FIXED 4-40UNC SCREWLOCKS	
MATERIAL				DRAWING NO.	
FINISH		SCALE: 1:1		DxLxxPDTK1YS-R	
		SIZE: A3		REV B	
		FILE NO.:		SHEET 1 OF 1	

DO NOT SCALE DRAWING