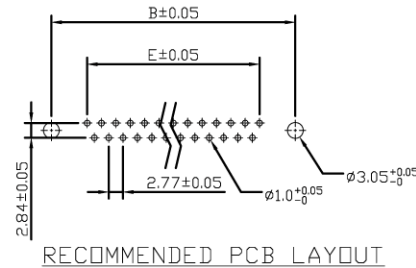
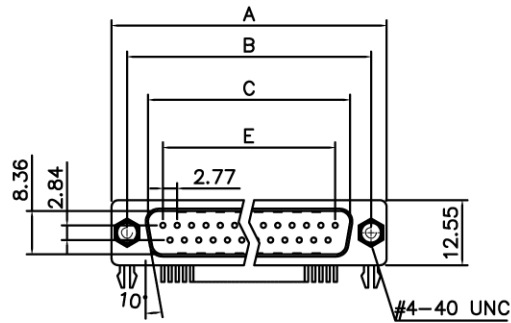


RoHS COMPLIANT

REVISIONS				
REV	ECN NO.	DESCRIPTION	APPROVED BY	DATE
A		▲	MICHAEL HUANG	2009-06-10



Product Specification

Material

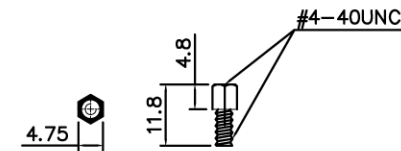
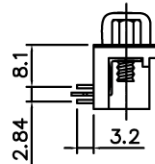
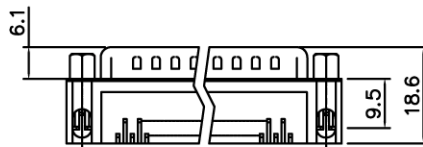
Insulator : Glass-Filled Thermoplastic PBT,UL94V-0  
 Contact : Copper alloy  
 Shell : Steel, 100u" Tin Over 50u" min Copper  
 Boardlock : Steel, Tin Plated.  
 Screwlock : Steel, Nickel Plated

Electrical

Contact Resistance : 20 milliohms max  
 Insulation Resistance : 1000  
 magohms at 500 VDC  
 Dielectric Withstanding Voltage :  
 1000 VAC/rms 60Hz for 1 minute  
 Current Rating : 3 AMP  
 Volatge Rating : 250 VAC/rms 60Hz

Environmental

Temperature Range : -55°C ~ +85°C



#4-40 unc screwlock installed

ORDER CODE;

DxLxxPBTK1YS-R

shell size & No

Positions;

- DEL09 - 9 pos
- DAL15 - 15 pos
- DBL25 - 15 pos
- DCL37 - 37 pos

Dimensions

Positions	A	B	C	E
9	30.81	24.99	16.92	11.08
15	39.20	33.30	25.25	19.39
25	53.05	47.04	38.96	33.24
37	69.40	63.50	55.42	49.86

DIMENSIONS: <input type="checkbox"/> MM [INCH] <input type="checkbox"/> INCH [MM] <input checked="" type="checkbox"/> MM ONLY		CAD GENERATED DRAWING, DO NOT MANUALLY UPDATE	
UNLESS OTHERWISE SPECIFIED, GENERAL TOLERANCE: DECIMALS      ANGLES .X ±0.38 [0.015]    X° ±3° .XX ±0.25 [0.010]   X° ±1.0° .XX ±0.13 [0.005]		CHECKED BY AND DATE JUSTIN XING 23-03-07 APPROVED BY AND DATE KING CHIU 23-03-07 THIRD ANGLE PROJECTION	
MATERIAL		TITLE R/A D-SUB PLUG; 8.08MM FOOTPRINT. FIXED 4-40UNC SCREWLOCKS & BOARDLOCKS	
FINISH		DRAWING NO. DxLxxPBTK1YS-R	
SCALE: 1 : 1		SIZE: A3	
FILE NO.:		SHEET 1 OF 1	

**gtk** GTK UK LTD.

DO NOT SCALE DRAWING

A  
B  
C  
D  
E  
F

A  
B  
C  
D  
E  
F

1      2      3      4      5      6      7      8

1      2      3      4      5      6      7      8