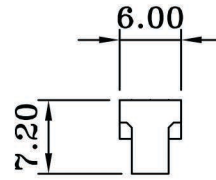
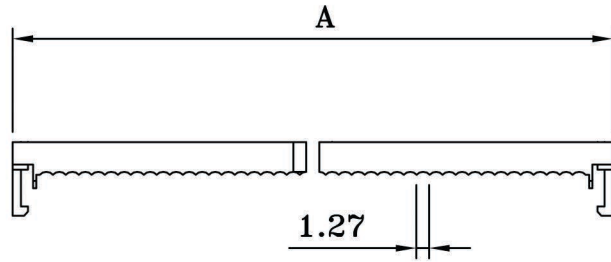
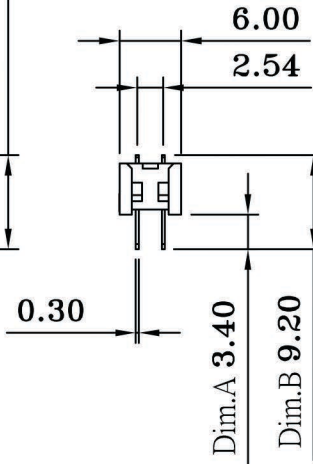
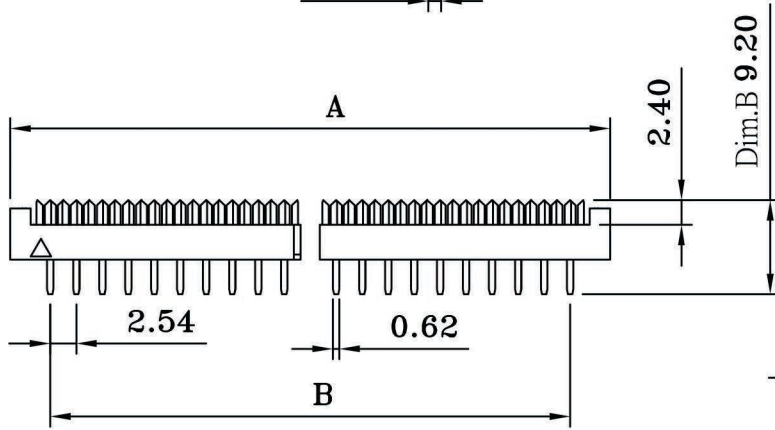


MATERIALS:
 INSULATOR: P. B. T. 30%GLASS FIBER, UL94V-0
 CONTACT MATERIAL: BRASS OR PHOSPHOR BRONZE,
 GOLD FLASH OVER NICKEL OR TIN

ELECTRICAL:
 CURRENT RATING: 1AMP.
 INSULATION RESISTANCE: 1000M Ω MIN.
 DIELECTRIC WITHSTANDING: 500VAC
 OPERATING TEMPERATURE: -55°C~+105°C



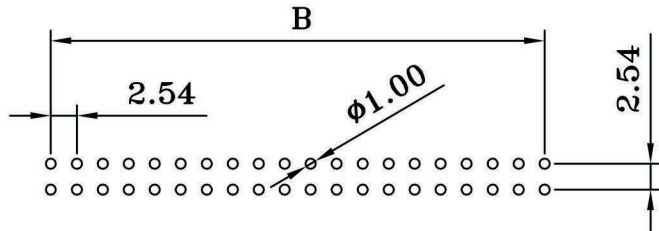
| CONTACTS | A | B | CONTACTS | A | B |
|----------|-------|-------|----------|-------|-------|
| DP-6P | 12.94 | 5.08 | DP-26P | 38.40 | 30.48 |
| DP-8P | 15.48 | 07.62 | DP-28P | 40.60 | 33.02 |
| DP-10P | 18.10 | 10.16 | DP-30P | 43.50 | 35.56 |
| DP-12P | 20.51 | 12.70 | DP-34P | 48.58 | 40.64 |
| DP-14P | 23.05 | 15.24 | DP-40P | 56.20 | 48.26 |
| DP-16P | 25.64 | 17.78 | DP-50P | 69.00 | 60.96 |
| DP-18P | 28.15 | 20.32 | DP-60P | 81.75 | 73.66 |
| DP-20P | 30.78 | 22.86 | DP-64P | 86.83 | 78.74 |
| DP-24P | 35.86 | 27.94 | | | |



ORDER CODE:

DPxxxN-R

Plating:
 S = Selective gold
 T = Tin
 No. of positions (6 - 64)



RoHS COMPLIANT

| | | | | | | | | |
|-----|----|----|-------------|-------------|------------|------------|------------|-------------|
| BOM | 1: | gk | GTK UK LTD. | PART NO | DP xxx N-R | X ±0.2 | .X ±0.2 | .XX ±0.2 |
| | 2: | | | | | | | |
| | 3: | | | | | | | |
| | | | | DRAWING NO | | EDITION: B | | ITEM: FD |
| | | | | DRAWN BY | LIN | 2005/09/12 | | SCALE: 1:1 |
| | | | | APPROVAL BY | | | | UNIT: m.m |