

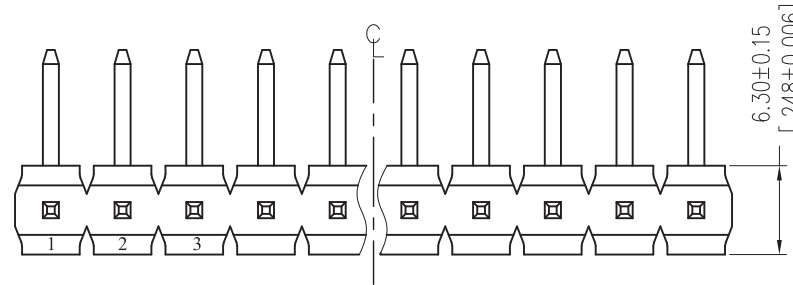
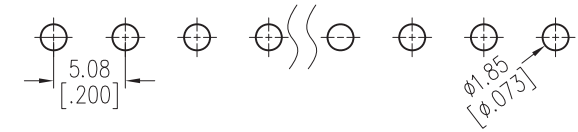
# HSF

**NOTES:**

Rated Current: 7.0AMP.  
 Contact Resistance: 20mΩ Max.  
 Withstand Voltage: 1000V AC/DC  
 Insulation Resistance: 1000MΩ Min.  
 Operation Temperature: -40°C to +105°C

Contact Material: Brass  
 Contact Plating: Au Or Sn Over Ni  
 Insulator Material: LCP+30%G.F UL94V-0 BK

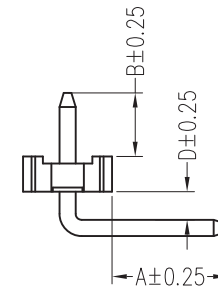
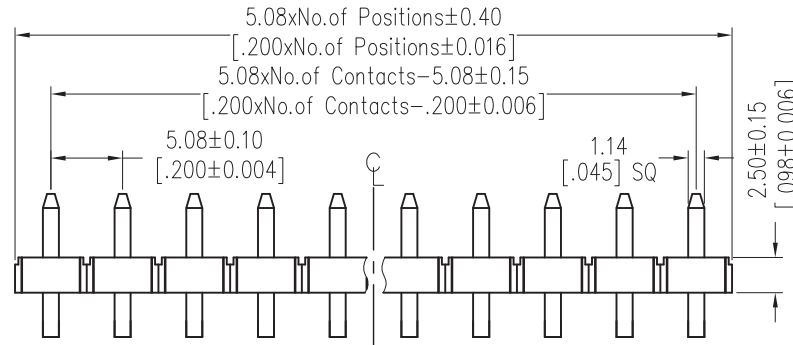
Recommended P.C.B Layout (Top Side)  
 (PCB BOARD TOLERANCE ±0.05)



## Ordering Information

**PHSR xx T 6 -13.8 - R**

No contacts: 02-20      Plating: T - Tin



Dimensions	
A	13.8
B	3.9
D	4.4

REV	DATE	MODIFICATION DESCRIPTION	CHANGE	OPERATION	DRAW	DATE	SCALE	FIT	PART NO.
				x.x ±0.40	JYHuang	2012.07.03	UNIT	mm	PHSRxxT6-13.8-R
				x.xx ±0.25	CHECK	DATE	SIZE	A4	
				x.xxx ±0.15	APPROVE	DATE	SHEET	1/1	PH5.08 SINGLE ROW 90° PLANE BENDING H=2.5
				Angle ± 3'			PROJ.	Customer NO.	
				DIM TOL					

**gtk** **GTK UK LTD.**