

4 3 2 1

D

C

B

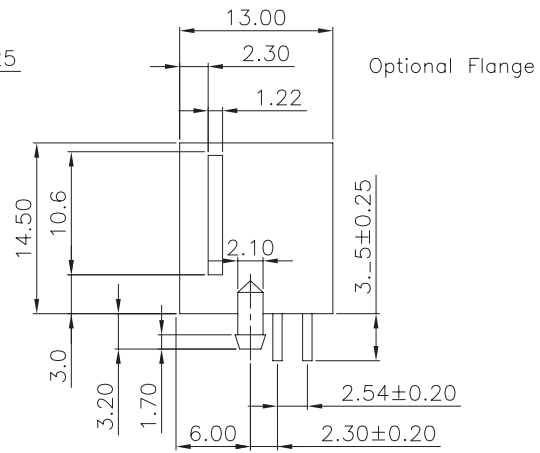
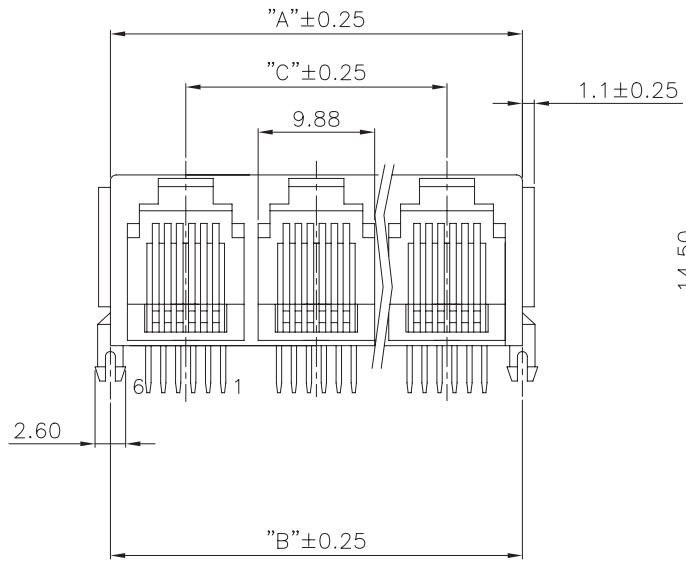
A

D

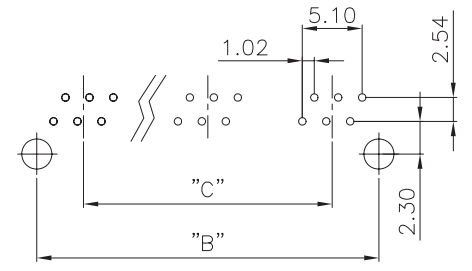
C

B

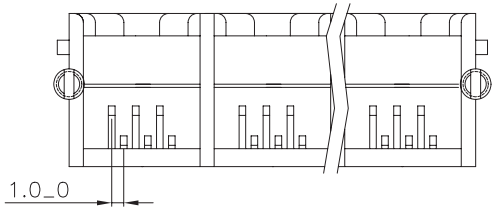
A



MATERIALS
 HOUSING; PBT POLYESTER UL94V-0. BLACK
 CONTACT MATERIAL; PHOSPHOR BRONZE
 CONTACT PLATING; 6u" GOLD OVER NICKEL
 Cavity conforms to FFC Rules and Regulations PART68, SUBPART F



**Recommended PCB Layout
(Component Side)**



A=11.65(m/m)XP+0.60(m/m) $\triangle C$
 B=11.65(m/m)XP+0.30(m/m) $\triangle C$
 C=11.65(m/m)X(P-1)
 P=NUMBER OF PORTS

Order Information
MTSGX-6610NBUF-R

No. of Ports
 2: _Ports
 ?
 9: 9Ports
 A: 10Ports
 B: 11Ports
 C: 1_Ports



TITLE 6 POSITION GANGED MINI LOW PROFILE SIDE ENTRY PCB JACK FROM 2PORTS UP (RoHS)		All Dimensions in mm	OPEN TOLERANCES	DWG. Kate 12/15/09'		
PART NO. MTSGX-6610NBUF-R	REV. C		Fraction Decimals Angles X . ±0.50 X.X ±0.38 X.XX ±0.25 X.XXX ±0.10	CKD. Justin 12/15/09'	C	Update Drawing
REF. NO.	SCALE 2:1	SHEET 1 of 1	APPD. Justin 12/15/09'	B	Update Drawing	04/21/06'
	QA. NO.			A	New Release	02/20/05'
				REV.	DESCRIPTION	DATE

4 3 2 1