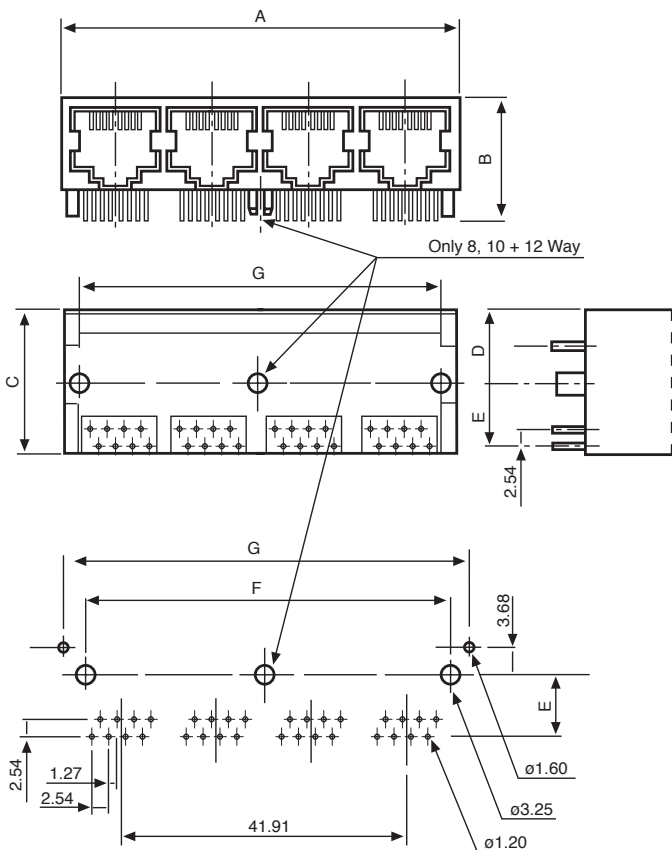


Modular Telephone Sockets

Harmonica Jacks - Shielded
PCB Connectors

No. of Ports	A	B	C	D	E	F	G
2	31.12	17.15	21.27	10.89	8.89	25.40	30.87
4	59.03	17.15	21.27	10.89	8.89	53.34	58.81
5	73.03	17.15	21.27	10.89	8.89	67.31	72.78
6	87.00	17.15	21.27	10.89	8.89	81.28	86.75
8	114.94	17.15	21.27	10.89	8.89	109.22	114.69
10	142.88	17.15	21.27	10.89	8.89	137.16	142.63
12	170.82	17.15	21.27	10.89	8.89	165.10	170.57

No. of Ports	Part Number
2	MTSG2-8810SB
4	MTSG4-8810SB
5	MTSG5-8810SB
6	MTSG6-8810SB
8	MTSG8-8810SB
10	MTSG10-8810SB
12	MTSG12-8810SB



for more information call
01344 304123

